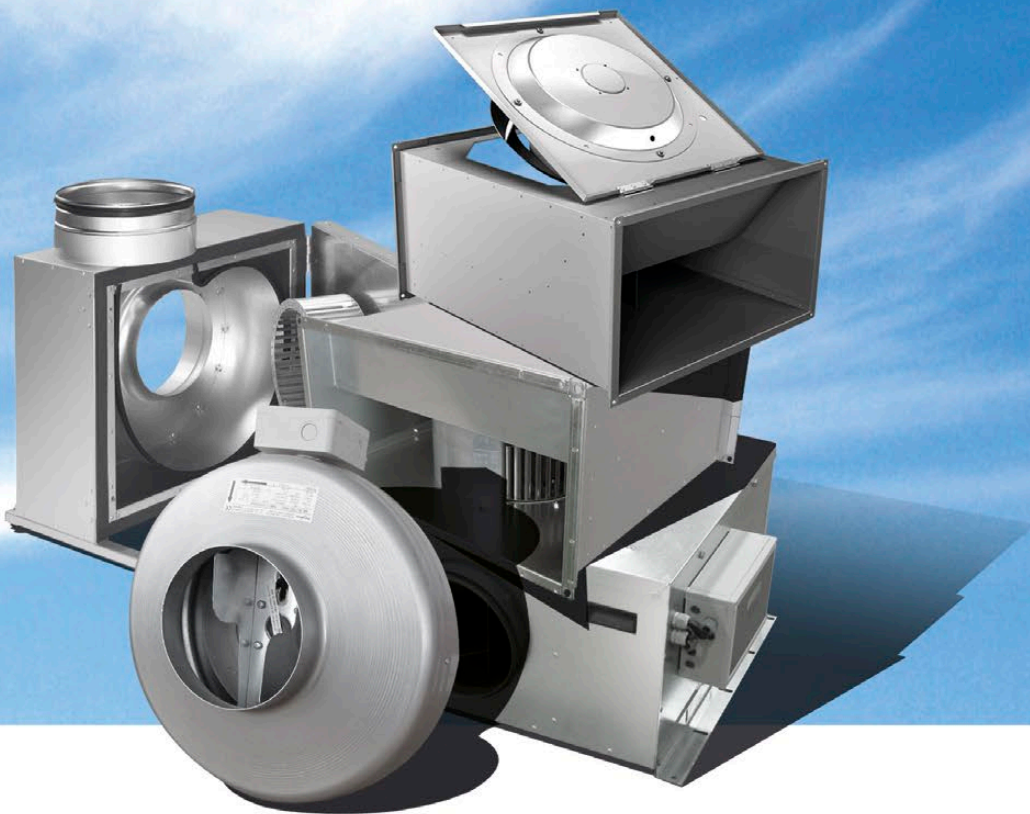


Ventilation Solutions
Product Range > Box Fans



FläktWoods

Fläkt Woods Box Fans:
A full-blown range of fans fulfilling every requirement from square one on.

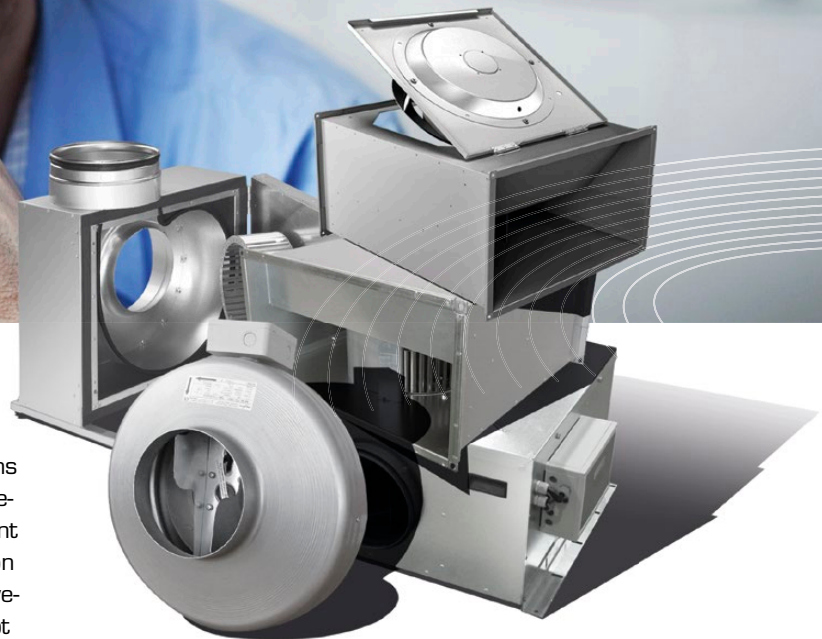


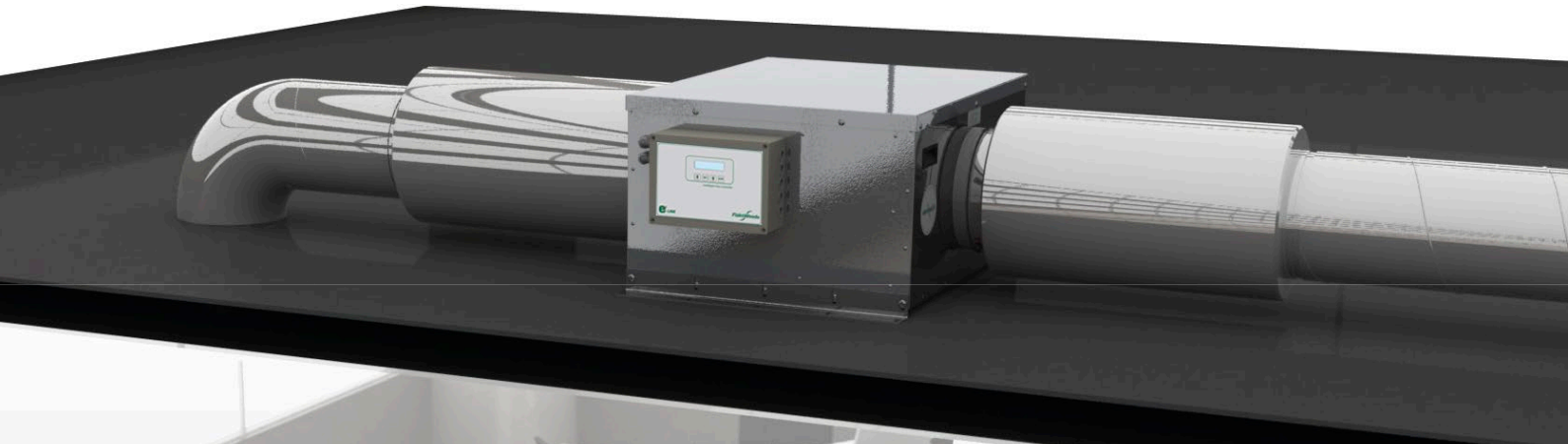
Fläkt Woods offers the widest range of fans in the market. Our line of box fans covers all types of situations and requirements, from compact and energy efficient to sturdy and fire-proof. They all build on our long experience as manufacturer and are developed to deliver the best possible performance. Not only in form of impressive technical characteristics but also in reality, as parts of well designed ventilation solution. That's where our experience as system solutions developer really shows.

Fans are a core component of every ventilation system. Essential for the basic functionality and critical for many of the systems performance aspects. Indoor comfort is heavily relying on the fans to provide the necessary circulation to maintain air quality and temperature, while not causing noise or vibration issues doing it. The ventilation systems energy efficiency can be noticeably increased

by using low-energy fan models. Further optimization is possible in systems with Demand Controlled Ventilation, where remote controlled inverter fans run at the exact speed that is needed for the moment. And the overall economy is significantly affected by fans requiring a minimum of maintenance, showing long MTBF-intervals and having a long technical lifespan.

All of these are good reasons for us to design and produce the fans ourselves – and for you to choose them.





Features and options to cover every possible requirement

Performance

- All fans certified to ISO 5801
- CE Markings
- Low running noise

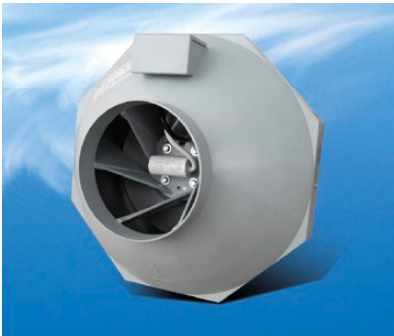
Reliability

- IP55 Motor protection
- Non-overloading

Energy efficiency

- Reduced SFP
- Inverter/Speed control (optional)

A wide range of fans for diverse requirements with quality, performance and efficiency as standard features.



Espada

- Diameters: 100–315
- Volume: up to 0.5 m³/s
- Pressure: up to 720 Pa
- Impeller: backward curved centrifugal
- Case style: plastic
- Case coating: –
- Case insulation: –
- Installation: horizontal or vertical
- Location: internal
- IP rating: IP44/IP54
- Temperature: 45–70°C depending on size



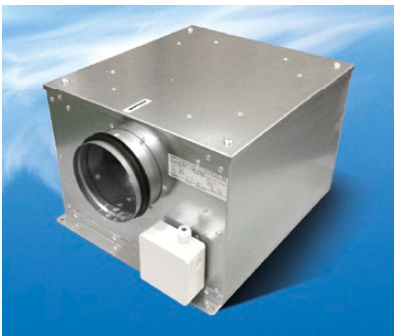
Ropera

- Diameters: 100–355
- Volume: up to 0.65 m³/s
- Pressure: up to 920 Pa
- Impeller: backward curved centrifugal
- Case style: spun steel
- Case coating: pregalvanised sheet steel
- Case insulation: –
- Installation: horizontal or vertical
- Location: internal
- IP rating: IP44/IP54
- Temperature: 45–70°C depending on size



Ropera EC

- Diameters: 160–355
- Volume: up to 0.56 m³/s
- Pressure: up to 640 Pa
- Impeller: backward curved centrifugal
- Case style: spun steel
- Case coating: pregalvanised sheet steel
- Case insulation: –
- Installation: horizontal or vertical
- Location: internal
- IP rating: IP44/IP54
- Temperature: 45–70°C depending on size



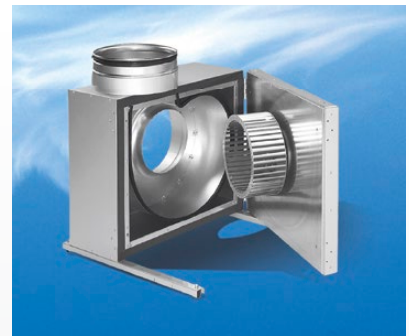
Sabina

- Diameter: 125–400
- Volume: up to 0.66 m³/s
- Pressure: up to 510 Pa
- Impeller: forward curved with single and double inlet
- Case style: folded steel
- Case coating: pregalvanised sheet steel
- Case insulation: 40 mm thick Rockwool
- Installation: horizontal or vertical
- Location: internal
- IP rating: IP44/IP54
- Temperature: 40–70°C depending on size



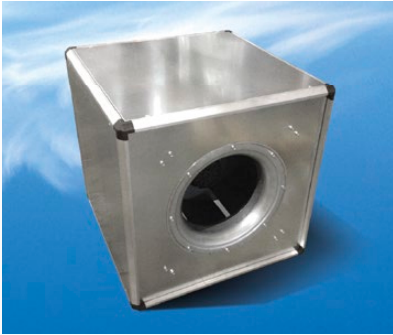
Falcata

- Spigot size: 400x200 – 900x500
- Volume: up to 2.8 m³/s
- Pressure: up to 1050 Pa
- Impeller: forward curved centrifugal
- Case style: folded steel
- Case coating: pregalvanised sheet steel
- Case insulation: –
- Installation: horizontal or vertical
- Location: internal and external
- IP rating: IP54
- Temperature: 40–65°C depending on size



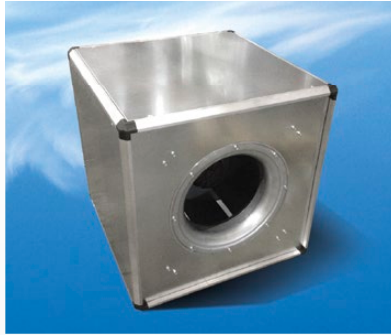
Deba

- Diameters: 200–450
- Volume: up to 2.3 m³/s
- Pressure: up to 1950 Pa
- Impeller: forward curved centrifugal up to 280, backward curved up to 500
- Case style: folded steel
- Case coating: pregalvanised sheet steel
- Case insulation: double skinned Rockwool sandwich
- Installation: vertical discharge
- Location: internal and external
- IP rating: IP55
- Temperature: 100°C



Estoc

- Diameters: 355–710
- Spigot size: 500x500 – 1020x1020
- Volume: up to 5.2 m³/s
- Pressure: up to 1150 Pa
- Impeller: backward curved centrifugal
- Case style: PentaPost construction
- Case coating: pregalvanised sheet steel
- Case insulation: double skinned 20mm fiberglass insulation
- Installation: multiple outlet orientations
- Location: internal/external w. weather cowl
- IP rating: IP54
- Temperature: 40–55°C depending on size



Estoc EC

- Diameters: 355–710
- Spigot size: 500x500 – 1020x1020
- Volume: up to 4.3 m³/s
- Pressure: up to 820 Pa
- Impeller: backward curved centrifugal
- Case style: PentaPost construction
- Case coating: pregalvanised sheet steel
- Case insulation: double skinned 20mm fiberglass insulation
- Installation: multiple outlet orientations
- Location: internal/external w. weather cowl
- IP rating: IP54
- Temperature: 40–60°C depending on size



Estoc Targe

- Diameters: 355–630
- Spigot size: 500x500 – 1020x1020
- Volume: up to 5.8 m³/s
- Pressure: up to 1450 Pa
- Impeller: backward curved centrifugal
- Case style: PentaPost construction
- Case coating: pregalvanised sheet steel
- Case insulation: double skinned 20mm fiberglass insulation
- Installation: multiple outlet orientations
- Location: internal/external w. weather cowl
- IP rating: IP54
- Temperature: 75–110°C depending on size



Katana & Katana Plus

- Spigot size: 500x250 – 1000x500
- Volume: up to 3.1 m³/s
- Pressure: up to 920 Pa
- Impeller: backward curved centrifugal
- Case style: folded steel
- Case coating: pregalvanised sheet steel
- Case insulation: 20 mm insulation (Plus version)
- Installation: horizontal or vertical
- Location: internal and external
- IP rating: IP54
- Temperature: 45–70°C depending on size



Katana EC & Katana EC Plus

- Spigot size: 600x350 – 1000x500
- Volume: up to 3.3 m³/s
- Pressure: up to 900 Pa
- Impeller: backward curved centrifugal
- Case style: folded steel
- Case coating: pregalvanised sheet steel
- Case insulation: 20 mm insulation (Plus version)
- Installation: horizontal or vertical
- Location: internal and external
- IP rating: IP54
- Temperature: 40–60°C depending on size



Make your own selection with our online Fan Selector tool – or contact the specialists at flaktwoods.com

New controls range Smart energy-saving solutions

The e³co Active is designed to offer environmental management through a controllable solution for the ventilation of Public, Commercial and Residential buildings, applying demand controlled ventilation ensuring optimum performance at minimum running costs.



Improved Environment

Our advanced ventilation control maintains improved indoor air quality, improved productivity and comfort.

Energy and Cost Savings

Our demand controlled solution, reduces ventilation running costs, energy consumption, maintenance and noise.

Increased Safety

Control system (sensors) run a low voltage-SELV (Safety Extra Low Voltage) improving the safety of installers and users.

Simplified Installation

Sensors and switches can be wired directly into their associated controller plugs, which are supplied as standard, pre-installed into the Intelligent Fan Controller PCB. Sensors and switches are supplied with a 10m length of cable and a flexible gland as standard.

Single Source

All Intelligent Fan products are stand alone, and fully functional, ensuring operational responsibility is from one source.

Scope

The Intelligent Fan System from Fläkt Woods offers a full range of fans with an integral intelligent control unit along with a range of switches, sensors and fittings to enable easy installation.

Accessories

Complementary products for all your needs

CONTROLS

EEID



EEDS



EEDP



TEID



TEDS



TEDSD



TEDP



TDID



TDDS



TDDSD



TDDP



TYPE POT 1

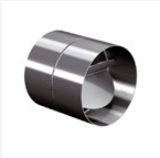


TYPE POT 2



ACCESSORIES

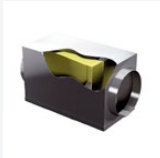
BDS



MFE



CFB



CSA



MFR



CFC



CIG



FLS



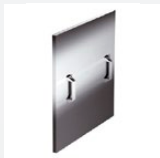
SFC



SIC



SSD



SAD



SOC



SWR



SIG



SSC



STP



SDT



SMT



RSA



RFC



RCF



RLS



RAD



RFB



DRC



DFC



DWB



We Bring Air to Life

Fläkt Woods is a global leader in air management. We specialize in the design and manufacture of a wide range of air climate and air movement solutions.

Our collective experience is unrivalled. We are constantly aiming to provide systems that precisely deliver required function and performance as well as maximum energy efficiency.



AIRTREND Ltd.
Predstavništvo u Beogradu
Kumanovska 14, 11000 Beograd
Tel: 011/3836886, 3085740
Faks: 011/3444113
e-mail: gobrid@eunet.rs
web: www.airtrend.rs

FläktWoods